

# The Collaborative Update

December 2020



## The Collaborative in 2020

In 2020 the Collaborative focused on systems-based solutions to rising rates of complex chronic disease and unsustainable rates of hospital readmission. A trial of care pathways is in development that will enable complex patients to be treated effectively in community settings, with rapid access to hospital when required.

The COVID-19 pandemic of course had a major impact on the work of The Collaborative, twice halting the implementation of a frequent attender pilot program. But there were also some benefits, allowing partners to work together in new ways. The development of COVID-19 positive pathways were one such collaboration, which saw 80% of COVID-positive patients successfully treated in the community through GP-led care.

The goodwill and momentum created by the success of the COVID-19 positive pathways presents an opportunity to transition to other co-designed person-centred models of care that utilises each organisation's strengths.

*The Collaborative is a partnership between Melbourne Health (MH), cohealth, Merri Health and North Western Melbourne Primary Health Network (NWMPHN). These organisations work together to improve patient care, outcomes and pathways for our shared community in the inner north west of Melbourne.*

*The work of The Collaborative brings together the strength and expertise of each organisation to add value at the interface of primary and acute care.*

## Meet The Collaborative Team



Left to right: Top row: Chris Carter - CEO, North West Melbourne Primary Health Network; Christine Kilpatrick - CEO, Melbourne Health; Tassia Michaleas - CEO, Merri Health; Nicole Bartholomeusz - CEO, cohealth; Dr Antoinette Mertins - General Manager, Aged & Primary Care Merri Health

Second row: Caz Healy - Lead Executive, Services cohealth; Professor George Braitberg - Executive Director of Strategy, Quality and Improvement, Melbourne Health; Janelle Devereux - Executive Director, Health Systems Integration, North West Melbourne Primary Health Network; Sue Merritt - Manager, The Collaborative; Sanja Mihajlovic - Program Support Officer North Western Melbourne Primary Health Network.

### The Collaborative

working together for better health

**cohealth**

**The Royal  
Melbourne Hospital**

**Merri Health**  
Healthcare that moves with you

**phn**  
NORTH WESTERN  
MELBOURNE  
An Australian Government Initiative

# Project update

## Piloting care pathways for patients with COPD and CHF

In 2020-21, The Collaborative will trial a new model of care for patients with chronic obstructive pulmonary disease (COPD) and/or chronic heart failure (CHF). The trial is focused on older people with complex breathlessness who are at risk of multiple admissions to Melbourne Health and who reside in The Collaborative catchment areas of Melbourne, Moonee Valley, Moreland and Yarra local government areas.

The model will build on the care pathway approach developed for COVID positive patients, utilising care coordination as well as a respiratory and psycho-social risk stratification approach.

The core aims of the model are to:

1. Trial a risk stratification approach (clinical and social) that determines each patient's pathway, including a low risk pathway managed by primary care.
2. Reduce readmissions to MH and length of stay for this group of patients over a one-year period.
3. Identify and facilitate provision of the health and support services patients require to stay in the community and avoid unnecessary hospitalisation.
4. Improve patient experience

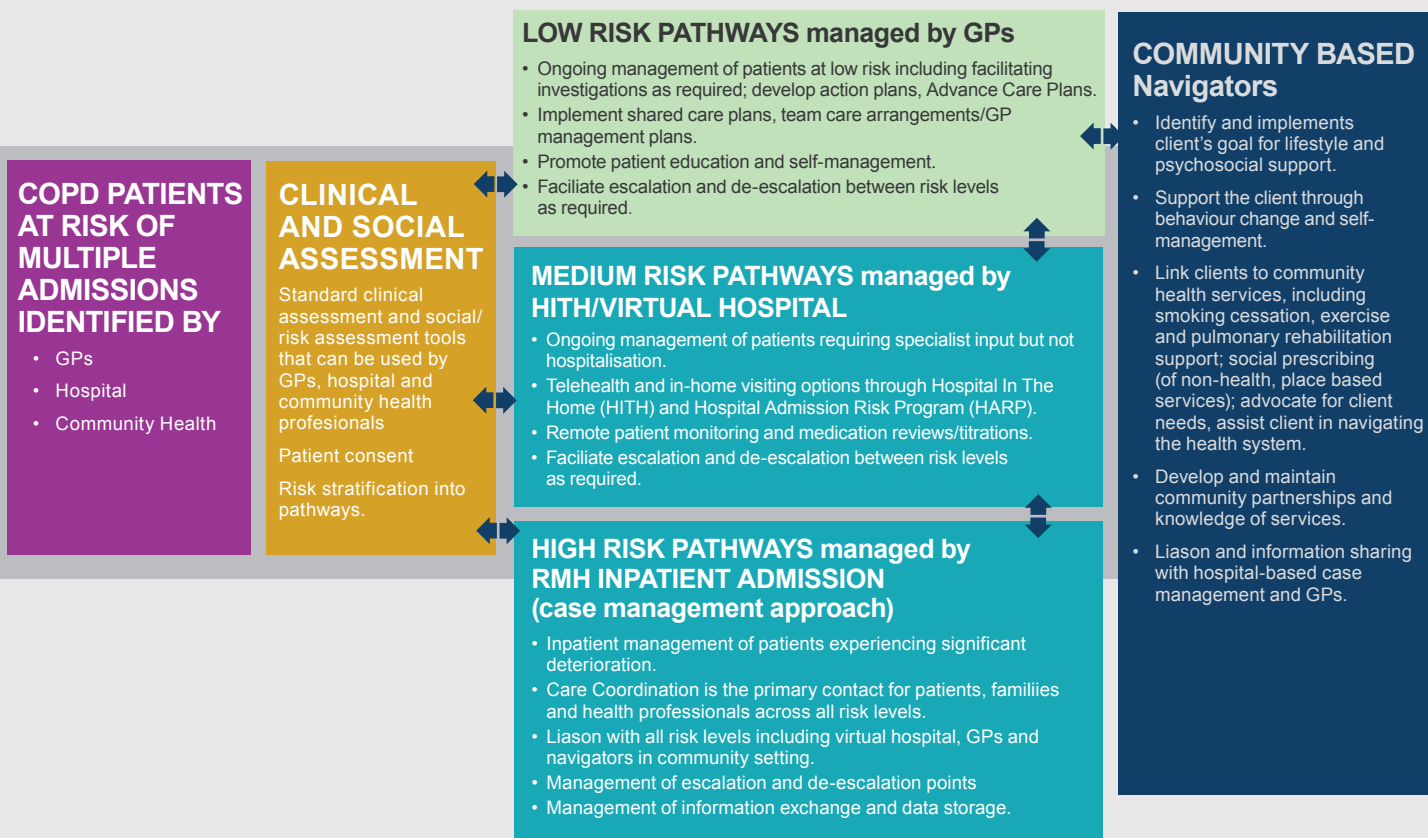
### GET INVOLVED

For more information about how to get involved contact:  
[sanja.mihajlovic@nwmphn.org.au](mailto:sanja.mihajlovic@nwmphn.org.au)  
or join us on  
Twitter @Collab\_Melb

Visit our website to access project summaries, reports and learnings:

[www.collaborative.org.au](http://www.collaborative.org.au)

## COPD and CHF patients - Risk Stratified Model



**The Collaborative**

working together for better health

**cohealth**

**The Royal  
Melbourne Hospital**

**Merri Health**  
Healthcare that moves with you

**phn**  
NORTH WESTERN  
MELBOURNE  
An Australian Government Initiative