

The

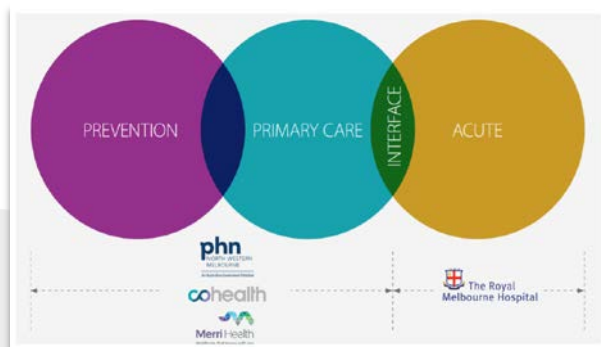
Collaborative Update

December 2019



Who is the Collaborative and what do they do?

The Collaborative is a partnership between the Royal Melbourne Hospital, cohealth, Merri Health and North Western Melbourne Primary Health Network. The work of The Collaborative brings together the strength and expertise of each organisation to add value at the interface of primary and acute care.



Why do we work together?

Rising rates of chronic disease, increased population growth and an ageing population is putting unsustainable pressure on the hospital system. In 2017/18 Royal Melbourne Hospital reported an increase of 5,500 more ED presentations and 6300 more inpatient admissions within existing resources. Facilitating the treatment of people with chronic disease in community settings helps to free up hospital resources that can then be used for those who are acutely unwell.

What have we done?

This years' work has been informed by the new Business Intelligence Application developed by Melbourne Health. This has allowed the partnership to understand the highest burdens of avoidable hospital admissions in close to real time. This application has been used to help determine the direction and focus of The Collaborative and will be used to understand the impact of future work. In the latter half of 2019, the Collaborative partners have focused on heart failure.

Work to date has included:

- Analysing Melbourne Health data to understand the scope and breadth of heart failure admissions and the complex medical history of patients
- Developing an understanding of the patient experience of heart failure
- Mapping of the complex local service system across all four partners
- Drafting a heart failure optimal care pathway in line with up to date evidence and best practice guidelines
- Working with partners to identify opportunities for shared improvements in service delivery
- Development of potential shared models of care

The Collaborative

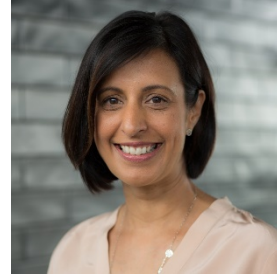
working together for better health

cohealth

 The Royal
Melbourne Hospital

 Merri Health
Healthcare that moves with you

 phn
NORTH WESTERN
MELBOURNE
An Australian Government Initiative



Images - left to right: Christine Kilpatrick CE Melbourne Health, Tassia Michaleas CE Merri Health, Chris Carter CE North West Melbourne Primary Health Network, Nicole Bartholomeusz CE cohealth

New faces and expertise

In May 2019 we welcomed Sue Merritt as the Collaborative Manager to lead the work of the partners. We also welcomed new cohealth CEO Nicole Bartholomeusz and new Merri Health CEO Tassia Michaleas into the partnership this year.

Where to now?

2020 will see the partners defining and delivering on improvements to service delivery informed by clinical input through the trialling of a new model of care across The Collaborative partnership.

Get involved

For more information contact:
stacey.dempsey@nwmpnhn.org.au
or join us on Twitter @Collab_Melb

Please visit our website to
access project summaries,
reports and learnings.

www.collaborative.org.au

